

COKER PUMP & EQUIPMENT COMPANY

ENGINEERED PUMPING SYSTEMS



AGGREGATE | BIO-TECH | CHEMICAL | FOOD PROCESSING | MINING
PHARMACEUTICAL | PULP & PAPER | SEMICONDUCTOR | WASTE WATER

We Stock & Deliver! Excellence Since 1956

POSITIVE DISPLACE-



Gear Pumps

Liquiflo, Ranger, Viking

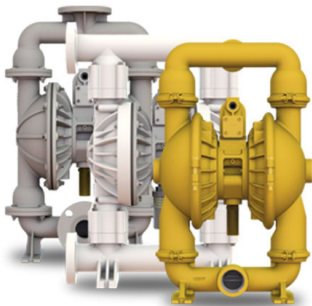
- Flows to 1,500 GPM, Pressures to 500 PSI, Viscosity to 2,000,000 SSU, Temperatures to 800°F
- Asphalt, Chemical, Corn Syrup, Fuel Oil, Florinert, Heat Transfer Fluids, Molasses, Polymer, Resins
- Hastelloy C, Cast Iron, Ductile Iron, Stainless Steel, Steel, Bronze



Rotary Lobe Pumps

Tri-Clover, Waukesha, Wright-Flow

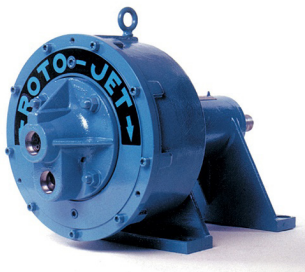
- Flows to 3,300 GPM, Pressures to 300 PSI
- Cosmetic, Beverage, Confectionery, Meat Packing, Dairy, Pharmaceutical, Chemical, Industrial
- Stainless Steel, Ductile Iron, Cast Iron, Hastelloy-C22



Air Operated Pumps

Graco, Lutz, Versa-Matic

- Flows to 240 GPM, Pressures to 5,000 PSI, Viscosity to 100,000 SSU
- Acids, Latex, Inks, Mine Tailings, Adhesives, Lubricants, Dyes, Corn Syrup, Starch, Wine, Paint, Pigments
- Aluminum, Cast Iron, Hastelloy C, Teflon, Polypropylene, PVDF, Stainless Steel



High Pressure

Burks, CAT-Pump, Carver, G&L Xylem, Giant, Grundfos, Hydra-Cell, Myers, Price, Roto-Jet, Wanner

- Flows from .05 to 80 GPM, Pressures to 15,000 PSI
- DI Water, Soap Solutions, Abrasives, Caustics, Acids, Fertilizer, Chemicals, Herbicides, Slurries, Wettable Powders, boiler feed, sanitary wash down
- Brass, Cast Iron, Kynar, Polypropylene, Stainless Steel, Teflon

CENTRIFUGAL



Self Priming

Barnes, Burks, CH&E, Weir WSP, Marlow, Price, Pioneer, Vertiflo

- Flows to 7,500 GPM, Pressures to 150 PSI
- Waste Water, Sludges, Slurries, Sewage, Sump
- Services, Petroleum Products, Fuel Oils, Acid, Chemical
- Cast Iron, Stainless Steel



Sanitary

Coker, Graco, Q-Pump, Tri-Clover, Waukesha, Wright-Flow

- Flows to 400 GPM, Pressures to 700 PSI
- DI Water, RO Systems, Beverage, Dairy, Food, Bio, Chemical, Almond Butter
- Stainless Steel



API

Carver, Viking, Weir, Wanner Hydra-Cell

- Flows to 11,500 GPM, Pressures to 300 PSI
- Refinery processing, Fuels, additives
- Ductile Iron, Steel

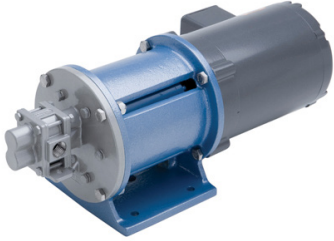
End Suction & Split-Case

AC, Carver, Deming, Barnes, Bell & Gossett, Burks, Grundfos, Gusher, Griswold, Hidrosta, MDM, Price, Summit, Stancor, Vertiflo, Weinman, Xylem

- Flows to 25,000 GPM, Pressures to 350 PSI
- Chemical, Industrial, Sanitary, Pharmaceutical, Semiconductor, Bio-Tech, Electronics
- Cast Iron, Bronze, Duro Metal, 316SS, 20SS, Hastelloy C, CD4MCu, Polypropylene, PVDF, Noryl



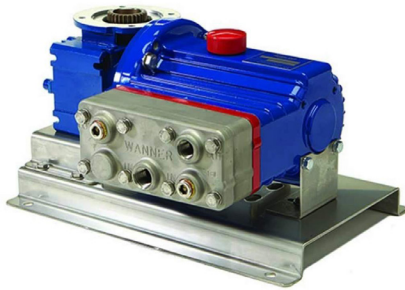
MISCELLANEOUS



Magnetic Drive

A-C, Caster, Liquiflo, Price, Viking

- Flows to 1,500 GPM
- Hazardous, Explosive, Corrosive Fluids, Chemical, Water Treatment, Semiconductor, Photo Processing, Pharmaceutical
- Cast Iron, Stainless Steel, Composite, Titanium, Polypropylene, PVDF



Metering

Neptune, Grundfos, Hydra-Cell, Vector

- Flows to 5 GPM, Pressures to 1,100 PSI
- Chemical, Feed, Oil Production & Recovery, Photographic, Plating, Electronics
- Cast Iron, Stainless Steel, PVC, Kynar



Submersible

**Barnes, Ebara, Grundfos, Hydrostal
Mody, Sta-Rite, Weir**

- Flows to 800 GPM, Pressures to 50+ PSI,
- Sumps, Waste water
- Cast Iron, Stainless Steel



Vacuum

Travaini

- Capacity to 1800 ACFM, Vacuum to 29 Inches HG
- Hospitals, Printing, Electronic, Vacuum Filtration, Vapor Recovery, Soil Drainage
- Cast Iron, Bronze, Stainless Steel

COKER PUMP & EQUIPMENT COMPANY

ENGINEERED PUMPING SYSTEMS

Since 1956 - Coker Pump & Equipment Company has been in business since 1956 as specialists in pump engineering as well as a stocking distributor for many popular brands of pumping equipment. Our expertise in pumping is built on a long history in the business. But our capabilities do not stop with distribution; we also fabricate, assemble, repair, engineer, and retrofit existing pump systems. We stock many varieties of pump components, including drive equipment, motors, couplings, gear boxes, and meters, and we use them to assemble pumps economically and quickly. Our experienced technicians can design pumps of many varieties, including centrifugal, vacuum, metering, and submersible pumps. We also engineer and construct positive displacement pumps, including rotary lobe, air operated, high pressure, and gear pumps. To learn more about pumps and pump fabrication and services that are available from Coker in this brochure, visit our website or contact us directly.

Positive Displacement

Alfa-Laval	Ranger
CAT Pumps	Tri-Clover
Continental	Viking
Giant	Wanner Hydra-Cell
Liquiflo	Watson-Marlow
Myers	Waukesha
Q-Pump	

Specifications

Gear to 1500 GPM-CI, STL, SS, Hast C, BRZ, Up to 2,000,000 SSU
Lobe to 3300 GPM-200 PSIICI, DI, SS, Alloy 20
Peristaltic to 200 GPM, 300 PSI
Magnetic Driven / Sealless High Pressure to 15,000 PSI

Sanitary

Coker	Wright Flow	Centrifugal and Positive Displacement
Graco	Tri-Clover	316SS to 1000 GPM
Ladish	Viking	Air Operated
Q-Pump	Versa-Matic	
	Waukesha	

Centrifugal

A-C (Allis-Chalmers)	Myers	0 - 25,000 GPM
Barnes	Richter	Sump and Sewage
Bell & Gossett	Paco	Circulating
Berkeley	Pioneer	Sump and Slurry - Rubber Lined
Burks	Price	Sump and Slurry - Hard Metal
Carver	Roto-Jet	Self Priming
Gould (G&L)	Sta-Rite	High Pressure 0 - 350 PSI
Griswold	Stancor	CI, SS, BRZ, Hast C, Poly, PVDF, Noryl, CD4
Grundfos	Summit	
Gusher	Swaby	
Hidrostal	Wienman	
Liquiflo	Weir	
Marlow	Zoeller	
Mody		

Air Operated

Graco		0 - 240 GPM
Lutz	Versa-Matic	50 - 5000 PSIG
		CI, Alum, SS, Poly, Teflon, Hast C, PVDF, STL

Turbine / Multi-Stage

Berkeley	G&L Xylem	Regenerative-Multi-Stage, SS, BRZ, CI, Poly, Kynar
Burks	MTH	0 - 400 GPM 0 - 700 PSIG
Caster	Price	Multi-Stage Line Shaft and Submersible
Carver	StaRite	
Grundfos		

Chemical

A-C (Allis-Chalmers)	Price	Peristaltic
Caster	Stancor	Centrifugal and Positive Displacement
Endura	Summit	Barrel -Transfer
Grundfos	Vector	Sealless - Magnetic Drive
Liquiflo	Versa-Matic	0 - 120 GPM and Metering 2%
LMI	Viking	SS, Hast C, PVC, Poly
Multi-Duti	Watson-Marlow	PVDF and Teflon
Neptune	Waukesha	Magnetic-Drive
Precision	Wanner Hydra Cell	Temperatures up to 360°F

Miscellaneous

BoosterpaQ® systems	Lid-Ease	Alum, CI, SS	Sanitary Valves
Bulk Container evacuation	Meter	Squeeze Valves	Sanitary Fittings
Cherry Burrell	Stainless Motors	Semi-positive Transfer Pumps	Stainless Motors and
Jabsco	Strainers	Hand Pumps and Meters	Gear Boxes
LC Meters	Tri-Clover		

Vacuum

Becker	Travaini	CI, SS	Liquid Ring, VANE
--------	----------	--------	-------------------